

Prioritization of Genes: Endeavour

Sandra Alandes Esteve
UBB-CIPF - IIS La Fe

Octubre 2018



Unidad de
Bioinformática y
Bioestadística



PRINCIPE FELIPE
CENTRO DE INVESTIGACION



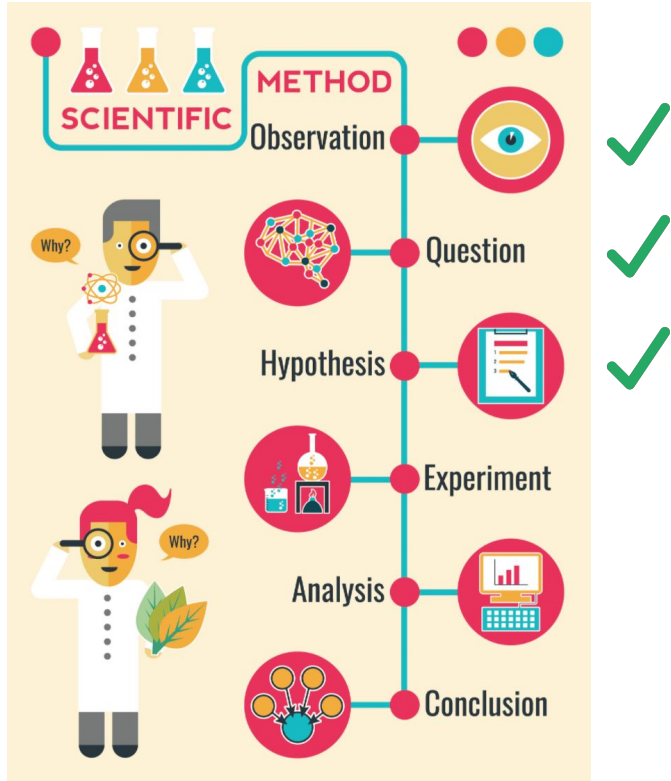
WODA

WEB-BASED OMICS DATA ANALYSIS

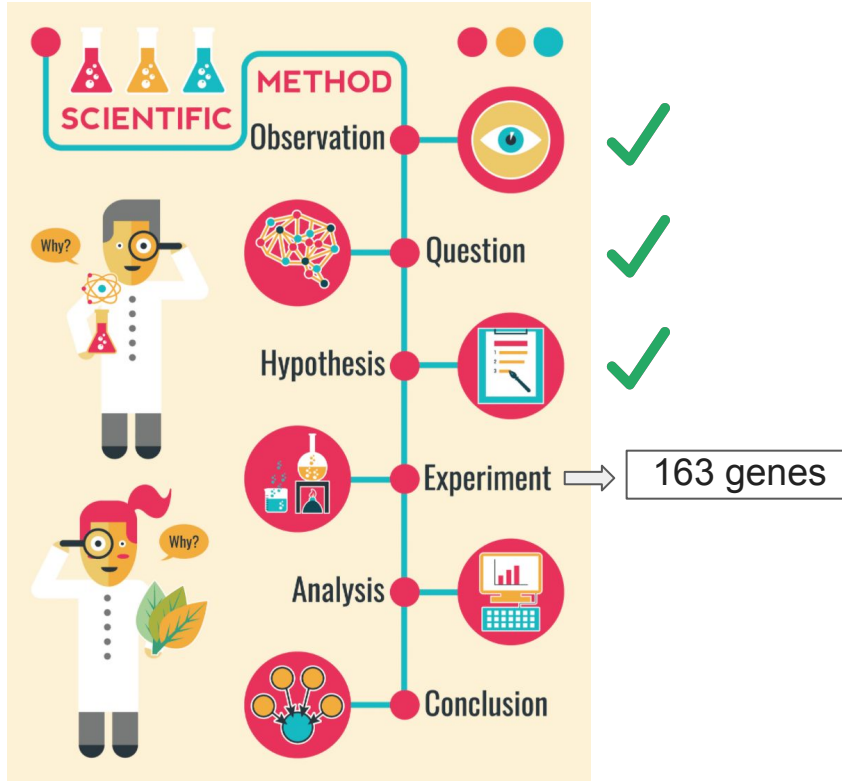
Índice

1. Introducción
2. Algoritmos
3. Selección de la información
4. Interpretación de resultados
5. Buscador de genes
6. Actividades

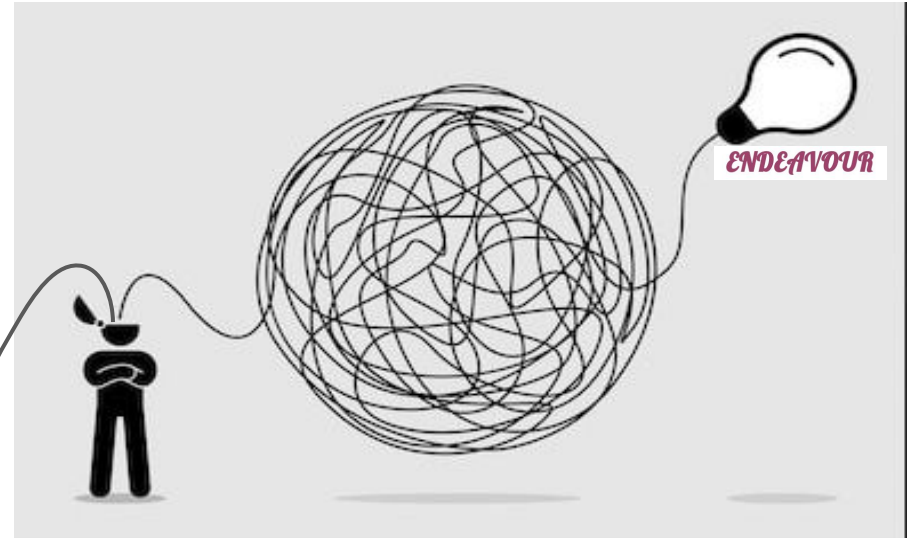
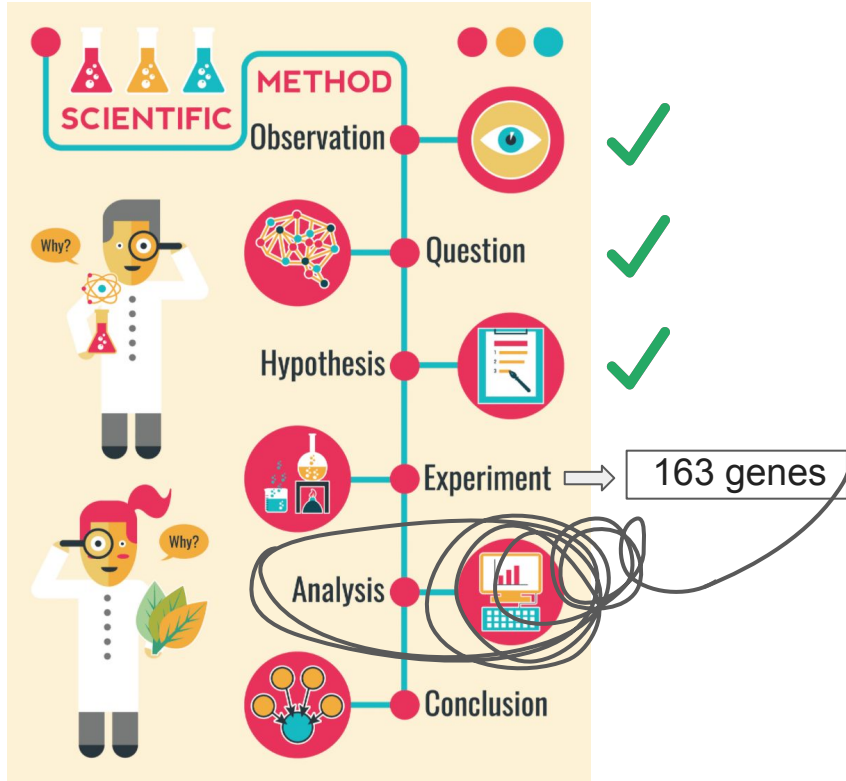
1. Introducción



1. Introducción



1. Introducción



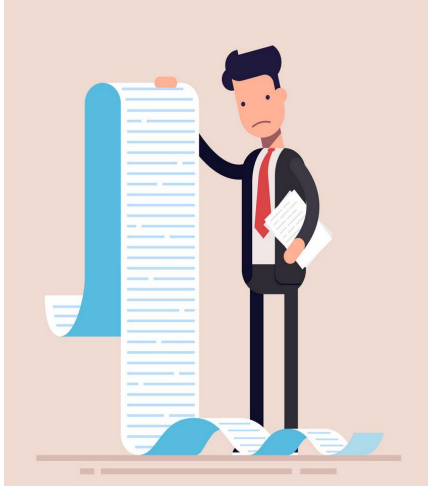
PRIORIZACIÓN

ENDEAVOUR

1. Introducción

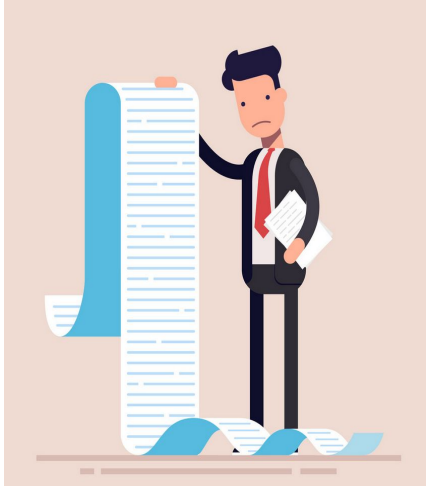
1. Introducción

Larga lista de genes
candidatos



1. Introducción

Larga lista de genes
candidatos

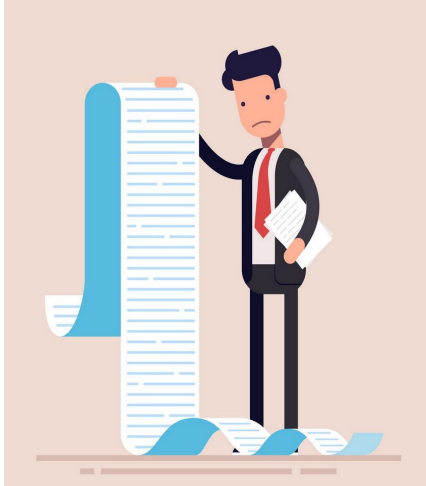


Falta de dinero



1. Introducción

Larga lista de genes
candidatos



Falta de dinero

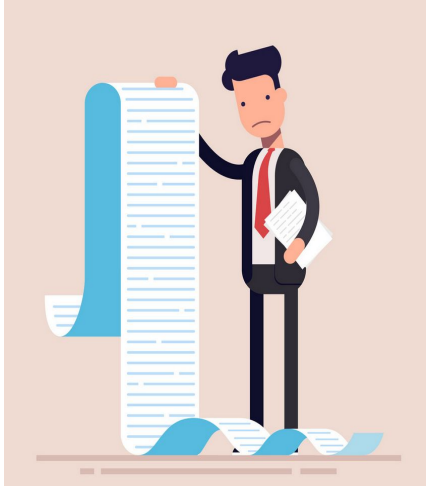


Falta de tiempo



1. Introducción

Larga lista de genes
candidatos



Falta de dinero



Falta de tiempo



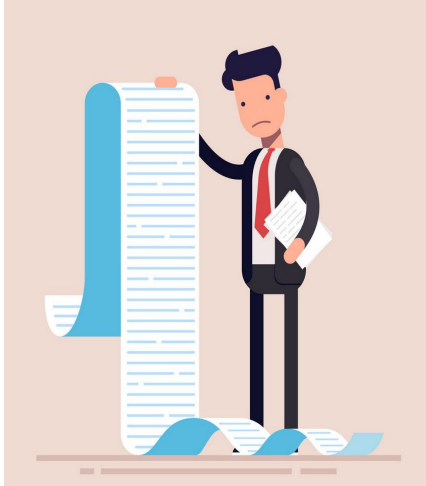
Hay que empezar



ENDEAVOUR

1. Introducción

Larga lista de genes
candidatos



Falta de dinero



Falta de tiempo



Hay que empezar



PRIORIZACIÓN

ENDEAVOUR

1. Introducción

- Herramienta de priorización de genes

1. Introducción

- Herramienta de priorización de genes

Lista de genes

TOMM40

IDE

APP

APOE

CLU

UBB

KLC1

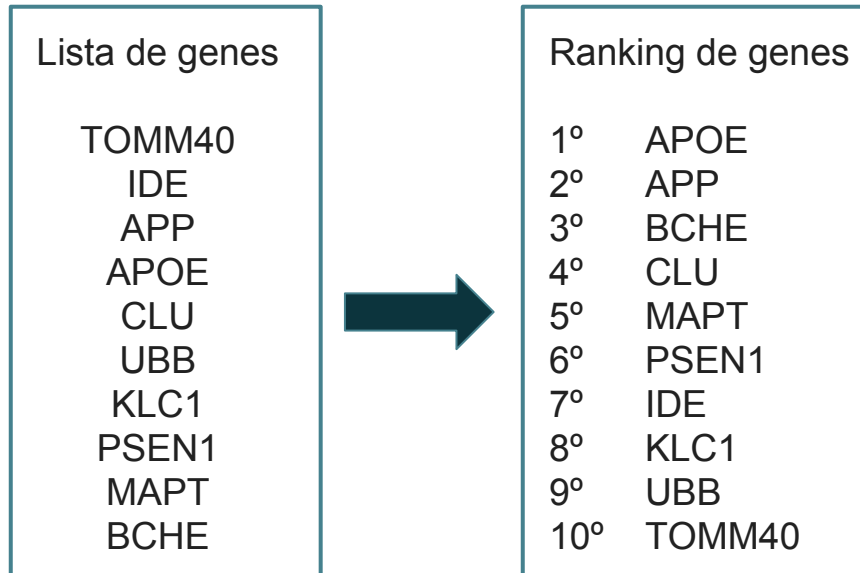
PSEN1

MAPT

BCHE

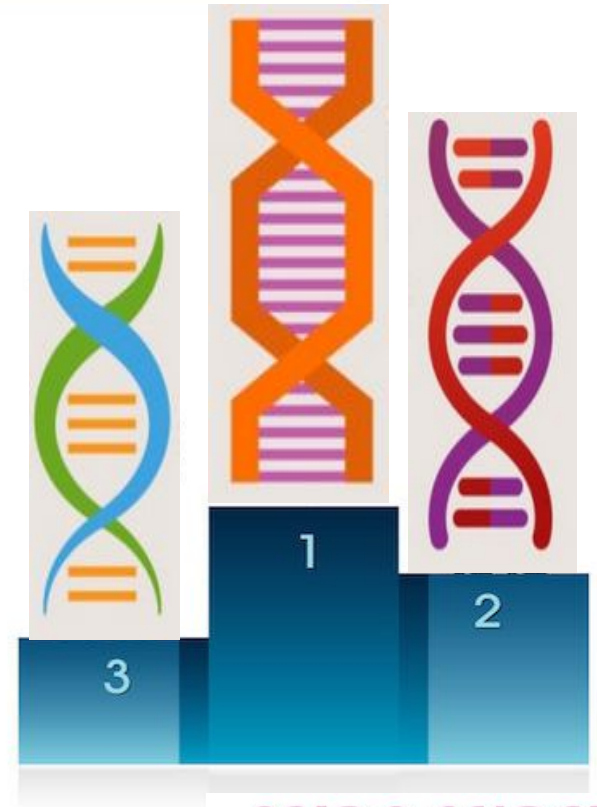
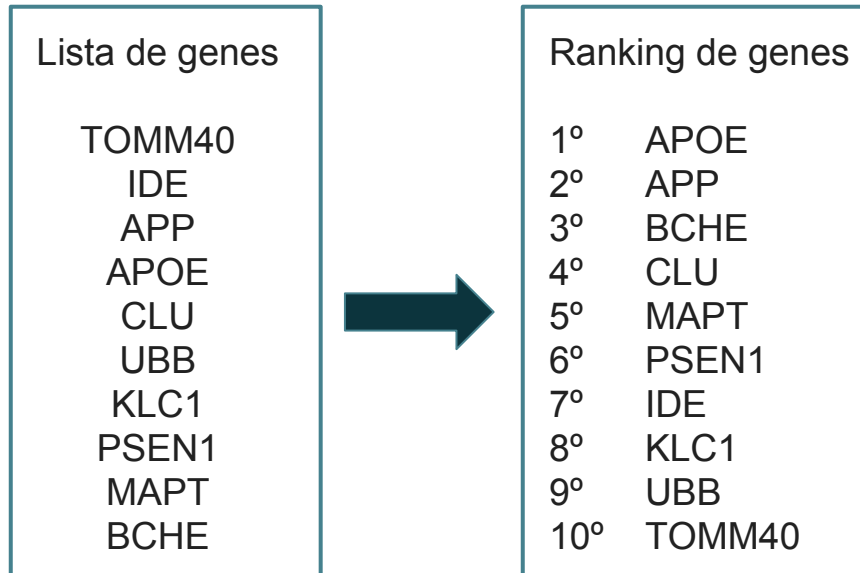
1. Introducción

- Herramienta de priorización de genes



1. Introducción

- Herramienta de priorización de genes



3. Selección de la información

3. Selección de la información

1 Species



Homo sapiens



Mus musculus



Caenorhabditis elegans



Rattus norvegicus



Drosophila melanogaster



Danio rerio

3. Selección de la información

1 Species

2 Training genes



Homo sapiens



Mus musculus



Caenorhabditis elegans



Rattus norvegicus



Drosophila melanogaster



Danio rerio

KCNJ2

Dock5

Nfasc

pan2

clk1

HIST2H2BE

KCNMB4

LRP2

Hist1h2ac

MYOT

FLCN

C10orf128

TF

PEX5L

RELN

AZGP1

Nptx2

Arrdc2

abca8

Tob2

3. Selección de la información

1 Species

2 Training genes

3 Data sources used to build models



Homo sapiens



Mus musculus



Caenorhabditis elegans



Rattus norvegicus



Drosophila melanogaster



Danio rerio

KCNJ2

Dock5

Nfasc

pan2

clk1

HIST2H2BE

KCNMB4

LRP2

Hist1h2ac

MYOT

FLCN

C10orf128

TF

PEX5L

RELN

AZGP1

Nptx2

Arrdc2

abca8

Tob2

Gene and protein function

Annotation – Gene Ontology

Annotation - Pfam

Chemical information

Annotation - DrugBank

Bio-molecular pathways

Annotation - Reactome

Annotation - CPDB

Phenotypic information

Annotation - GAD

Interaction networks

Interaction – String

Interaction – iRefIndex

Interaction – GeneRIF

Expression profiles

Expression – Su et al (2002)

Expression ontologies

Annotation – PaGenBase

Sequence based features

Blast

Annotation – Aura

Annotation – UniProt

Annotation – SIMAP (localization)

Annotation - Stitch

Annotation - WikiPathways

Annotation - hiPathDB

Annotation - OMIM

Interaction – BioGrid

Interaction – Mint

Expression – Su et al (2004)

Annotation – CGAP

Precalculated – Ouzounis

Annotation – mirZ

Text-mining

Annotation - RGD ChEBI

Annotation – RGD pathways

Annotation – RGD MP

Interaction – I2D

Interaction – HPRD

Expression – CMAP

Annotation - GNF

Precalculated – Prospectr

Annotation – InterPro

Annotation - BioCarta

Annotation – RGD RDO

Interaction – IntAct

Interaction – MIPS

Expression – Lukk et al

Annotation - eGenetics

Precalculated – HaploPred

3. Selección de la información

1 Species

2 Training genes

3 Data sources used to build models

4 Candidates



Homo sapiens



Mus musculus



Caenorhabditis elegans



Rattus norvegicus



Drosophila melanogaster



Danio rerio

KCNJ2

Dock5

Nfasc

pan2

clk1

HIST2H2BE

KCNMB4

LRP2

Hist1h2ac

MYOT

FLCN

C10orf128

TF

PEX5L

RELN

AZGP1

Nptx2

Arrdc2

abca8

Tob2

Gene and protein function

Annotation – Gene Ontology

Annotation - Pfam

Chemical information

Annotation - DrugBank

Bio-molecular pathways

Annotation - Reactome

Annotation - CPDB

Phenotypic information

Annotation - GAD

Interaction networks

Interaction – String

Interaction – iRefIndex

Interaction – GeneRIF

Expression profiles

Expression – Su et al (2002)

Expression ontologies

Annotation – PaGenBase

Sequence based features

Blast

Annotation – Aura

Annotation – UniProt

Annotation – SIMAP (localization)

Annotation - Stitch

Annotation - WikiPathways

Annotation - hiPathDB

Annotation - OMIM

Interaction – BioGrid

Interaction – Mint

Expression – Su et al (2004)

Annotation – CGAP

Precalculated – Ouzounis

Annotation – mirZ

Text-mining

Annotation - RGD ChEBI

Annotation – RGD pathways

Annotation – RGD MP

Interaction – I2D

Interaction – HPRD

Expression – CMAP

Annotation - GNf

Precalculated – Prospectr

Annotation – InterPro

Annotation - BioCarta

Annotation – RGD RDO

Interaction – IntAct

Interaction – MIPS

Expression – Lukk et al

Annotation - eGenetics

Precalculated – HaploPred

BEND4

Celf4

ank1

PHLDB2

BTBD11

Kih13

ank1

-

mtch2

znf574

AGK

SLC18A2

-

ddc

SLC10A4

Cnpy2

Dok6

AT4G28910

macrod2

ITPR1

5. Buscador de genes

Beegle

e.g. Alzheimer's disease

SEARCH KNOWN GENES



ENDEAVOUR

Sandra Alandes Esteve

salandes@cipf.es

ENDEAVOUR